



Ireland

New Abbey Theatre, Dublin

Architects: Michael Scott & Partners

Partner in charge: Ronald Tallon

This theatre has been built on the site of the historic and internationally known Abbey Theatre which was destroyed by fire. In addition to the main theatre (628 seats, including 97 on the balcony) there is a 157 seat secondary theatre in the basement, designed to be used for experimental plays, actor training etc. To comply with fire regulations, this had to be completely separate from the main theatre and it was not permitted to locate one auditorium over the other.

To provide maximum flexibility in the main auditorium, to allow the presentation of music in addition to drama, the proscenium is variable in width and height; the forestage can be extended up to 14 ft. and the ceiling reflector panels can be raised and lowered. The main stage is 72 ft. wide x 28 ft. deep.

The structure is generally of reinforced concrete, faced externally with sand-cement-bricks.

Théâtre construit sur l'emplacement de l'ancien Abbey Theatre, détruit par le feu. A la salle principale s'en ajoute au sous-sol une seconde (157 places), expérimentale et de répétition. Le proscenium varie en largeur et en hauteur pour permettre la présentation de musique en adjonction au drame.

Structure générale: béton armé à revêtement extérieur de briques.

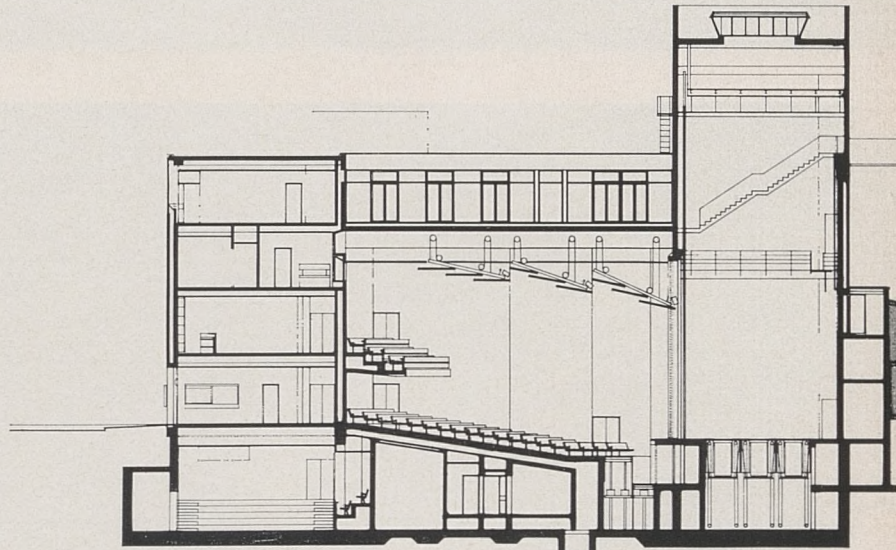
Das Theater wurde an der Stelle des ehemaligen, abgebrannten Abbey Theaters errichtet. Außer dem Hauptsaal besteht ein weiterer im Untergeschoß (157 Plätze) für Proben und Wiederholungen. Die Breite und Höhe der Vorbühne kann verändert werden, um die Anpassung der Musik an das Stück zu gewährleisten.

Allgemeine Bauart: Stahlbeton mit Backsteinverkleidung.

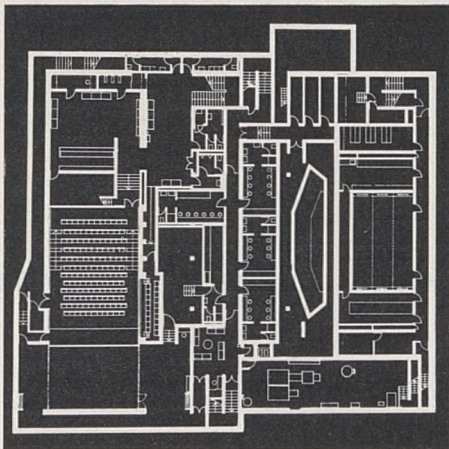




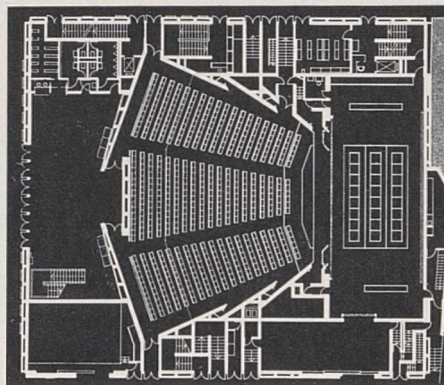
Photos: John Donat



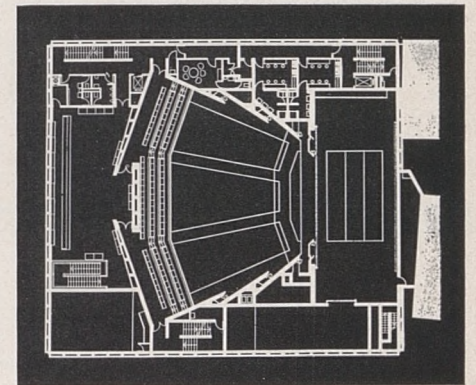
Longitudinal section



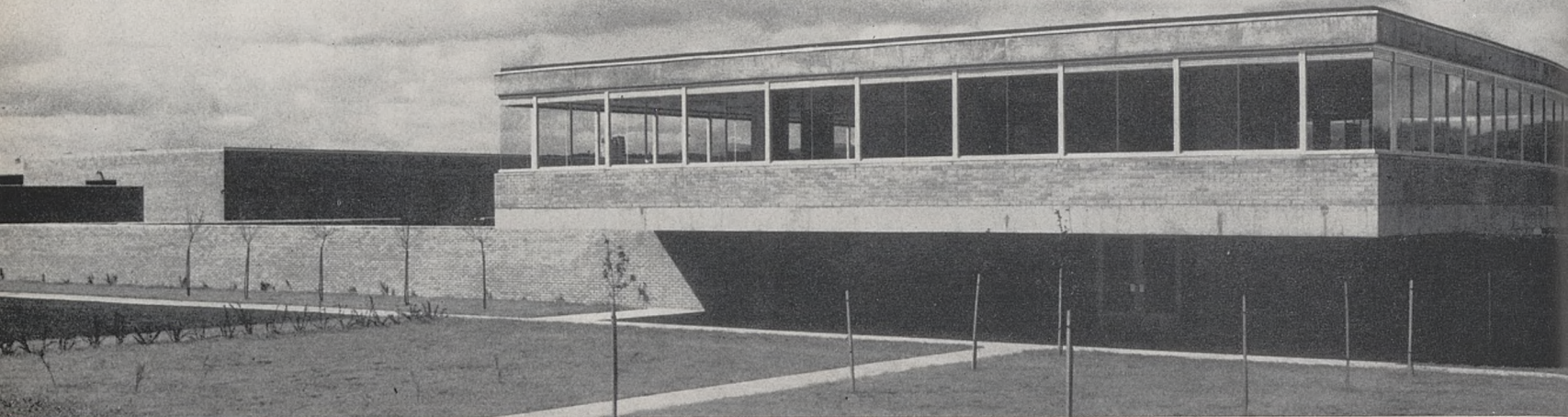
Lower basement and proscenium stage arrangement



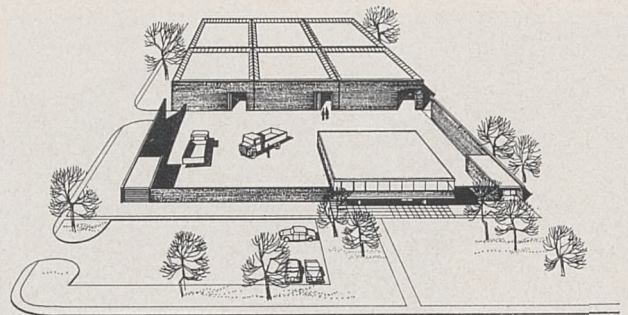
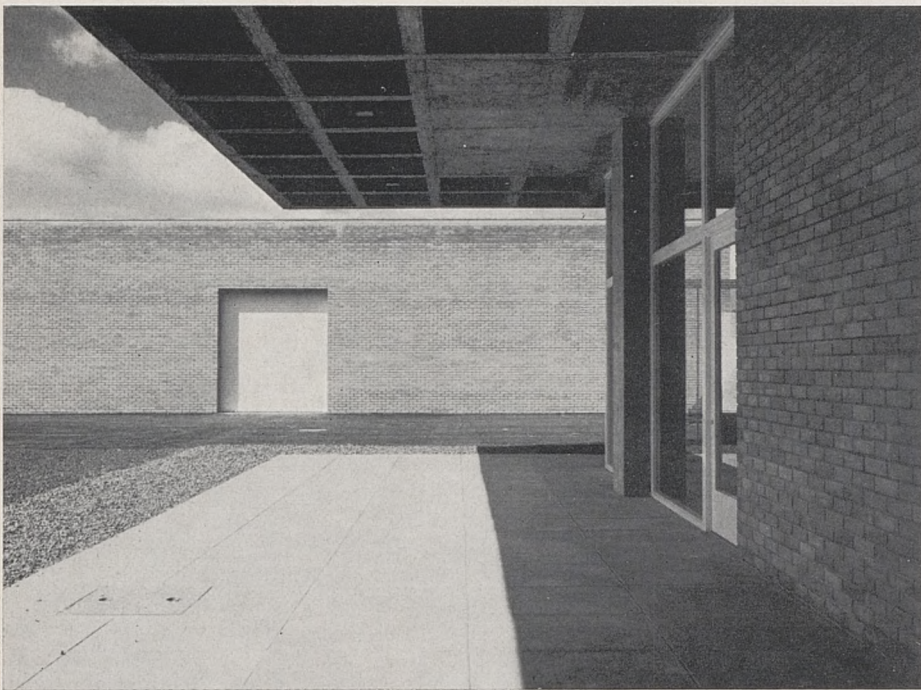
Ground floor plan



First floor plan



Photos: John Donat



Factory site at Deans Grange, Co. Dublin

Architects: Michael Scott & Partners
Partner in charge: Ronald Tallon

These factories are being constructed as a speculative venture as part of a scheme aimed at encouraging foreign industry to develop in Ireland. The factories are intended for use by firms specialising in light industrial work.

The scheme consists of 48 factory units of 5,500 sq. ft. each and eight office blocks with a number of caretakers dwellings, boiler houses and other ancillary buildings.

The individual factory units are 75 ft. square. Reinforced concrete columns at 37'6" centres support a coffered roof slab 67'6" square. The space between the edge of the roof slab and the surrounding wall is filled with glass.

The structure of the offices is identical to that of the factories only modified to allow vertical expansion to three storeys.

The photographs show one completed office block and two factory units of the group at the Northern end of the site with space on two sides for expansion.

Le projet, partie d'un plan pour le développement de l'industrie étrangère en Irlande, comprend 48 usines et 8 blocs de bureaux (avec conciergeries, chauffages, etc.) de structure identique, sauf une modification (bureaux) qui permette l'expansion verticale à trois étages.

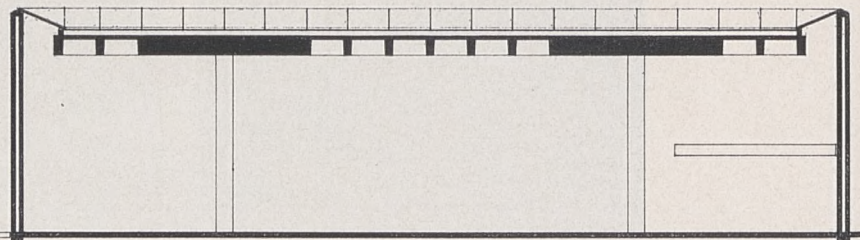
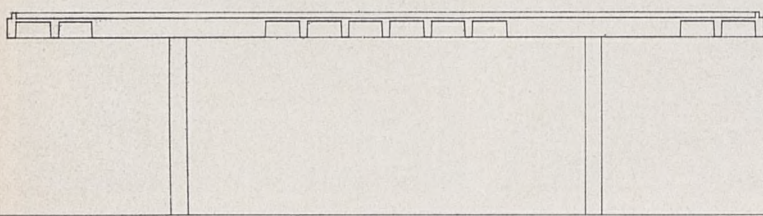
Structure: béton armé et verre.

Photos: un bloc de bureaux complet et deux usines à l'extrémité nord du groupe, avec de chaque côté l'espace nécessaire à l'expansion.

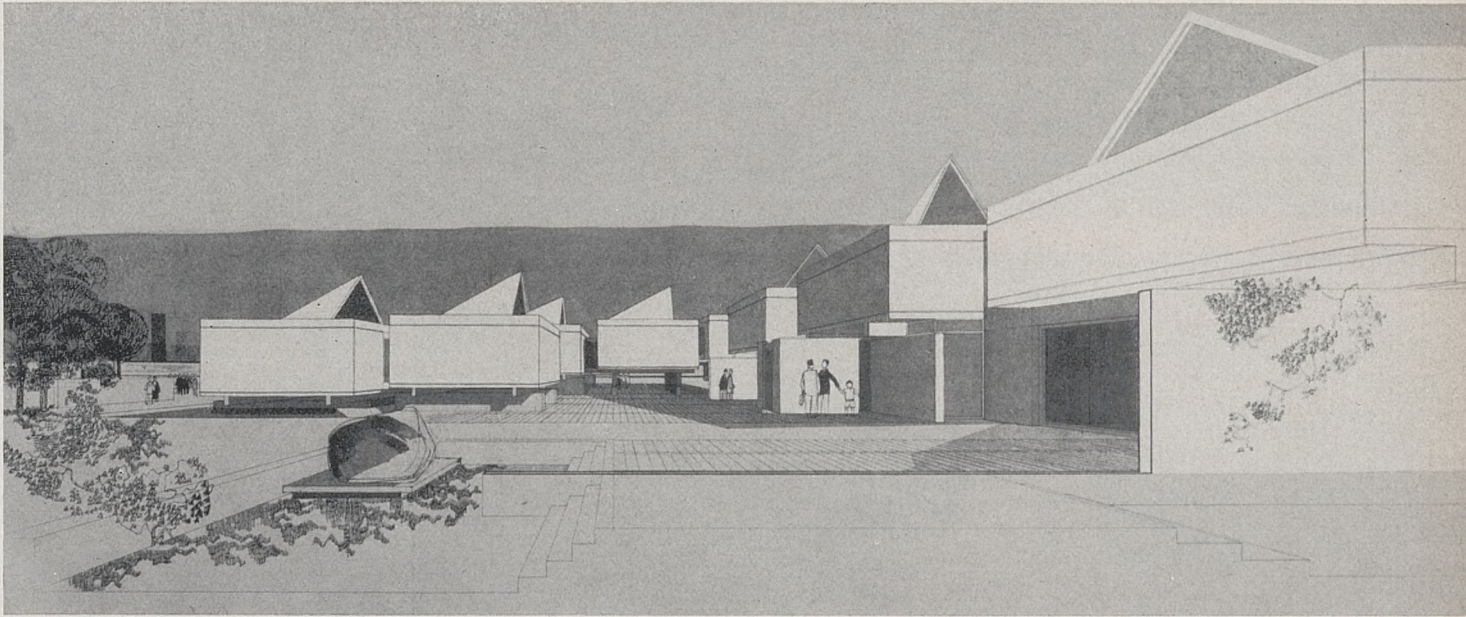
Das Projekt, Teil eines für die Entwicklung der ausländischen Industrie in Irland bestimmten Planes, umfaßt 48 Fabrik- und 8 Bürogebäude (mit Hausmeisterwohnungen, Heizungen usw.) von gleichartiger Bauart, außer einer Abänderung (Büro), die einen Erweiterungsaufbau bis zu drei Stockwerken erlaubt.

Bauart: Stahlbeton und Glas.

Fotos: Eine vollständige Bürogruppe mit zwei Fabrikgebäuden im Norden, bei denen beidseitig Platz zur Erweiterung gelassen wurde.



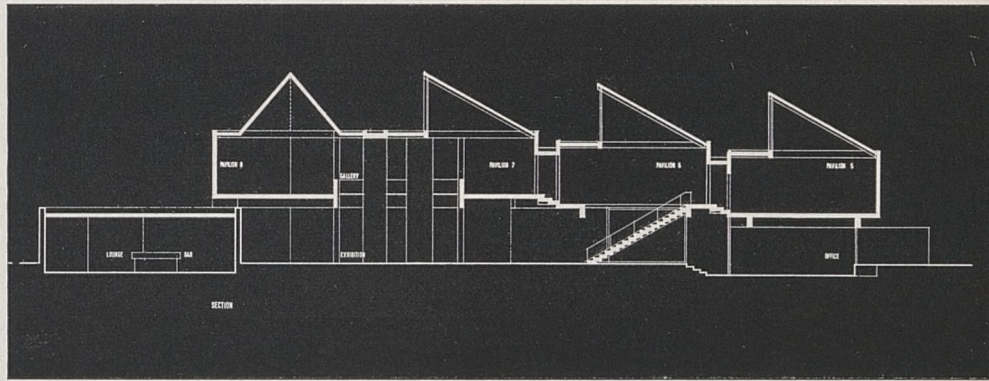
Cross section showing method of expansion of factory units



**Irish Pavilion
Expo Montreal 1967**

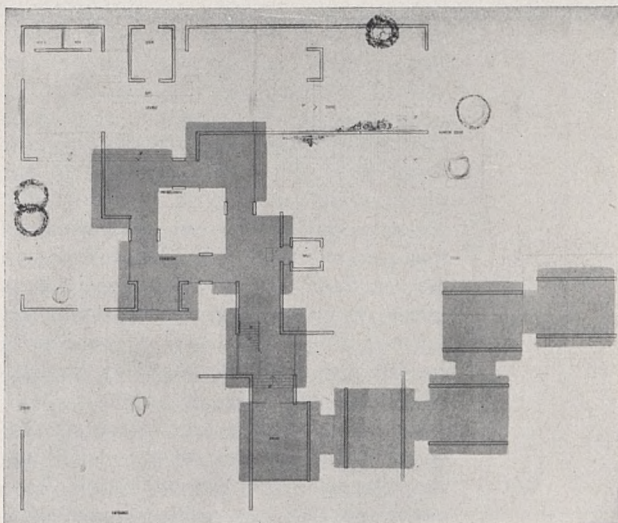
Architects: Stephenson, Gibney
& Associates

This project has had to be abandoned due to government credit restrictions. The pavilion was to consist of ten identical 24'0" x 24'0" units, connected by means of glazed links. Each unit was to be in reinforced concrete with a timber roof and rooflight, and was to be supported on two concrete crosswalls. These varied in height so that the floor level in each unit was raised by 1'6" as the visitor progressed through the pavilion, until he arrived at the main hall which was formed of four units at the same level, arranged in a hollow square around a sunken central courtyard.

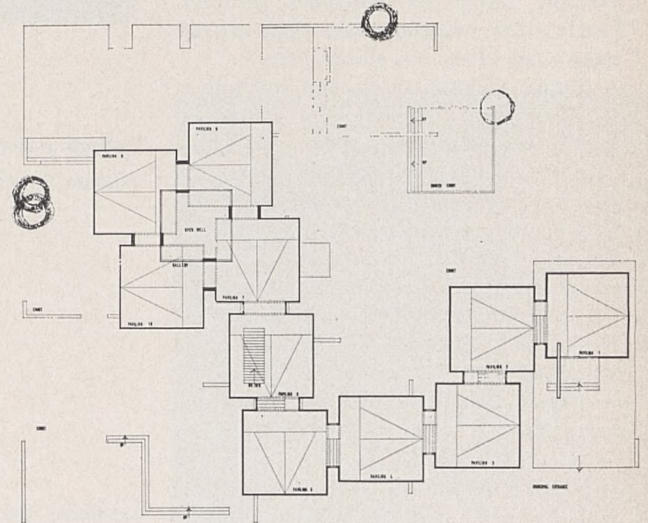


Projet abandonné consécutivement aux diminutions de crédit gouvernementales. Le pavillon: dix unités identiques, en béton armé, reliées entre elles par des éléments de verre et se haus-sant progressivement jusqu'au hall principal (quatre unités de même niveau), disposé autour d'une cour centrale « en creux ».

Das Projekt wurde auf Grund der Verminderung des Regierungskredites nicht ausgeführt. Der Pavillon: zehn gleiche Einheiten aus Stahlbeton, die untereinander durch Glaselemente verbunden sind und deren Höhe sich bis zur Haupthalle steigert (vier Einheiten von gleicher Höhe), die um einen « hohlen » Innenhof gebaut ist.



Ground floor plan



First floor plan