

Haggerston Secondary School

Architect:

Ernö Goldfinger et Associates

Assistants: L. Nowicki

J. Blacker

Miss N. Molis

Structural Engineer: Charles Weiss
& Partners

Quantity Surveyor: Cyril Sweett
& Partners

Mechanical Engineer: J. Roger Preston
& Partners

Electrical Engineer: Director of Electrical
& Mechanical Services, Greater London
Council

Drainage Consultant: R. A. Milner

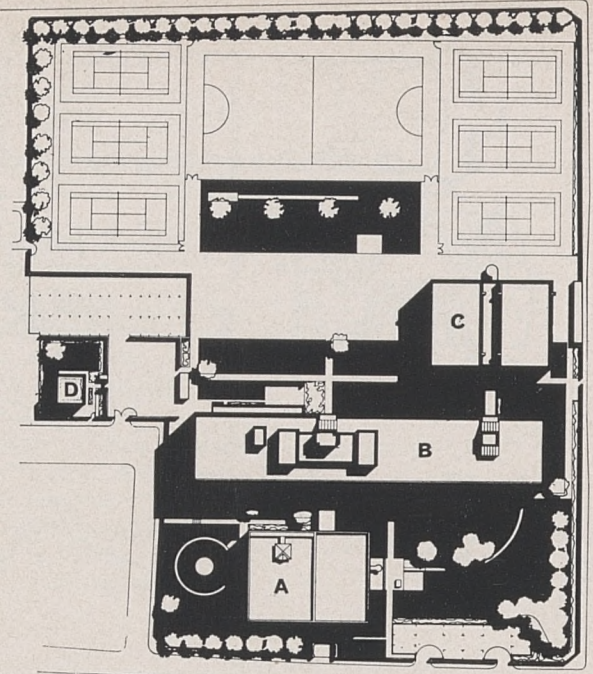
On the West side to the South of Block 'A' is a quiet garden. To the West is an arena for theatricals adjoining the Assembly Hall. In this area there is also a visitors car park.

Structure:

BLOCK 'A': is a structure of Staffordshire bricks covered by a coffered reinforced concrete deck, freely spanning over the Assembly Hall 55 ft. x 58 ft.

The Music Rooms have a double skin brick structure, the two skins being independently founded. The inner skin of the brickwork carries the ceiling structure while the outer skin carries the floor structure. The double glazing is also attached to its respective skins. These rooms, which can be hermetically sealed, have a special ventilating system. The Assembly Hall is also mechanically ventilated.

BLOCK 'B': The general conception of Block 'B' is that of open decks supported



Block 'A'. Showing Administration and Music Rooms

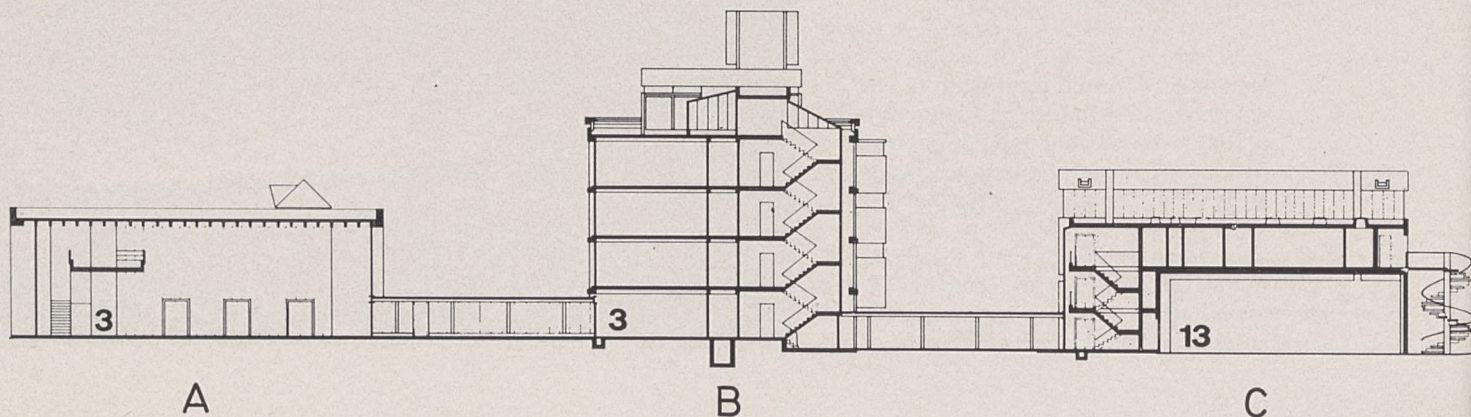
Haggerston Secondary School is a comprehensive school for 1,000 girls, incorporating a Youth Club and Evening Institute. The School consists of three distinct blocks: BLOCK 'A': Entrance block containing an Assembly Hall and Music Rooms as well as the Administration.

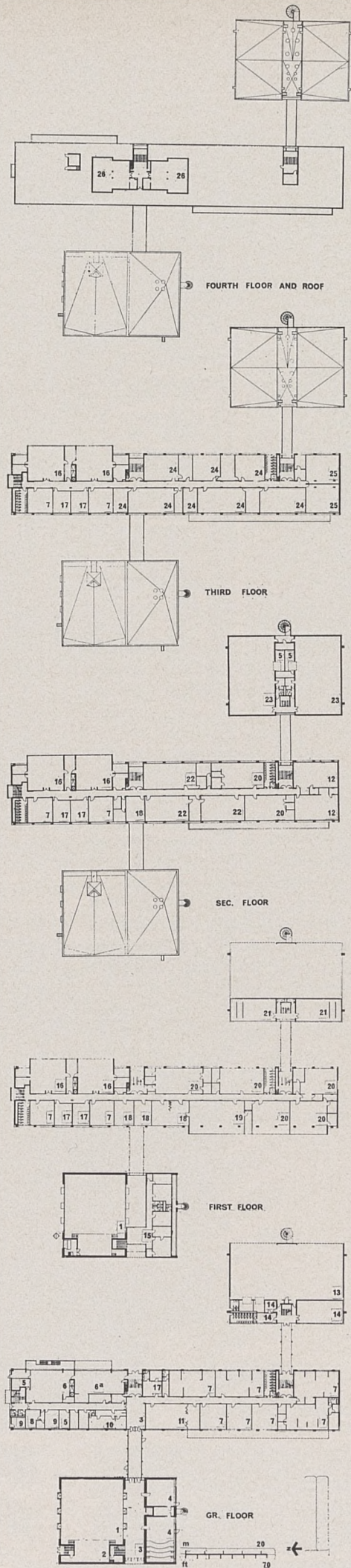
BLOCK 'B': The main teaching block has a ground floor, three upper floors, a partial fourth floor (Geography Rooms) basement boiler house and tank rooms for the whole school. There are three staircases giving access to the various floors.

BLOCK 'C': The gymnasium block is linked to the teaching block by covered open-sided gallery. This has, on the ground floor, an open games hall facing East which is two stories high, as well as a club room and office for the Youth Leader. On the first floor are changing rooms and showers and on the top floor are two large gymnasia, storage space for equipment as well as office and showers for the staff.

BLOCK 'D': School-keeper's cottage with garden.

There are extensive grounds. To the East of the buildings is laid out for sports. On this side there is also an extensive car park and bicycle sheds.





Room Numbers:

1. Assembly Hall
2. Stage
3. Entrance Hall
4. Music Rooms
5. Store room
6. Kitchen
- 6a Evening Institute Common Road
7. Classrooms
8. Kitchen staff room
9. Schoolkeeper's workshop
10. Medical Inspection Room
11. Teachers' Common Room
12. Needle/Craft rooms
13. Games Hall
14. Youth Club — Common Room and Youth Leader
15. Administration
16. Houseroms
17. Cloakrooms
18. Study Rooms
19. Library
20. Pottery and Craft Rooms/Art Rooms
21. Changing Rooms
22. Commerce Rooms
23. Gymnasium
24. Laboratories/Science Rooms
25. History Rooms
26. Geography Rooms

on reinforced concrete volumns. The modulation of the façade allows for re-arrangement of partitions at will. All the outside columns form vertical ducts connected with horizontal ducts at each deck. The convectors, which are incorporated in the membrane of the façade, are designed in such a way that wherever partitions are re-ected, they will function without alteration.

BLOC 'C': This is a reinforced concrete structure, the gymnasium being carried on four columns and two short walls. The long walls of the gymnasium form large beams from which hang the soffit of the Games Hall, which is an area 50 ft × 100ft, without obstructions.

BLOCK 'D': has load-bearing Staffordshire blue brick walls and reinforced concrete floors and roof.

