



Ireland

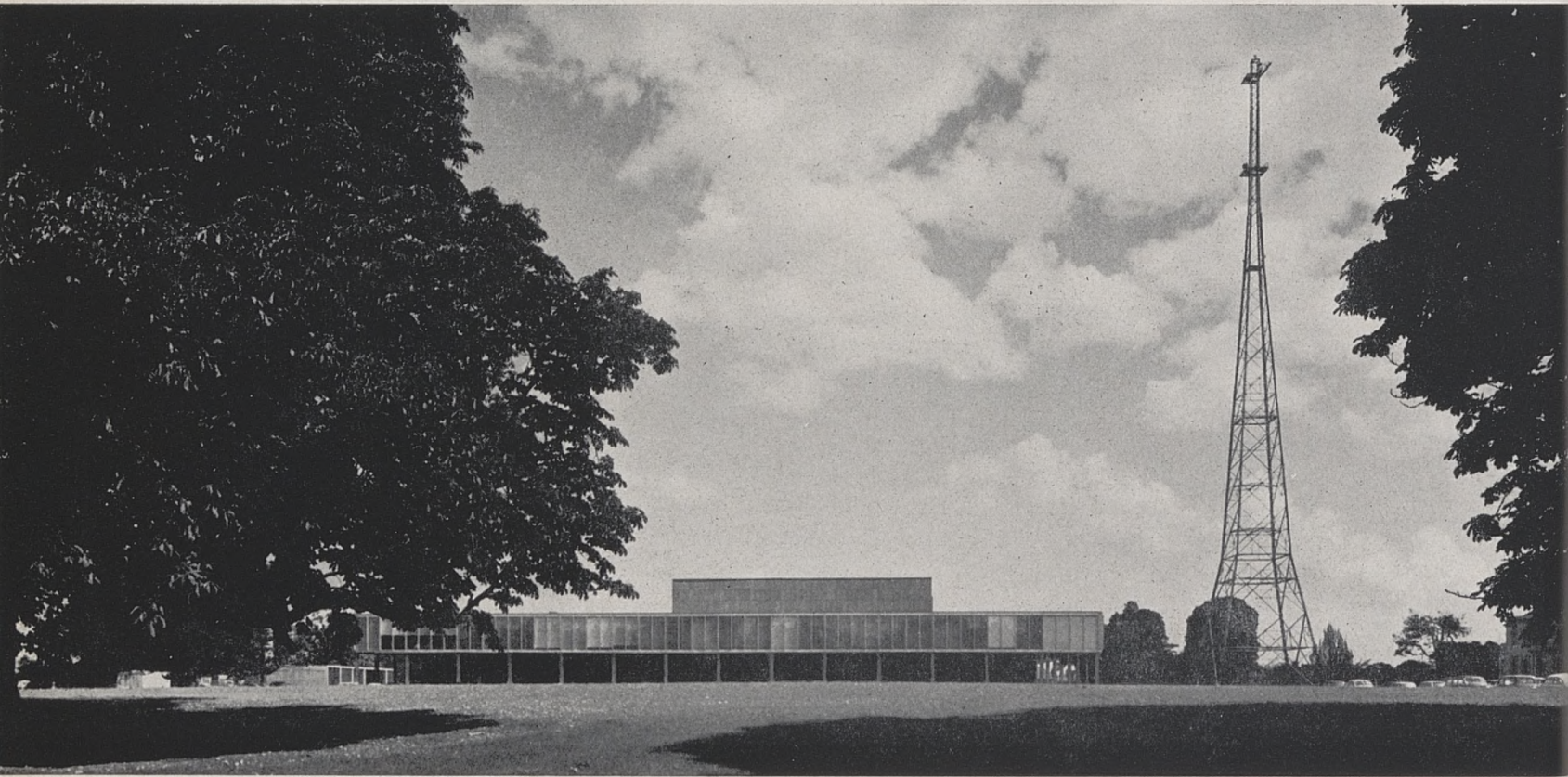
Television Centre, Dublin

**Architects: Michael Scott
and Partners**

Partner in charge: Ronald Tallon
Assistant: Patrick Reeves

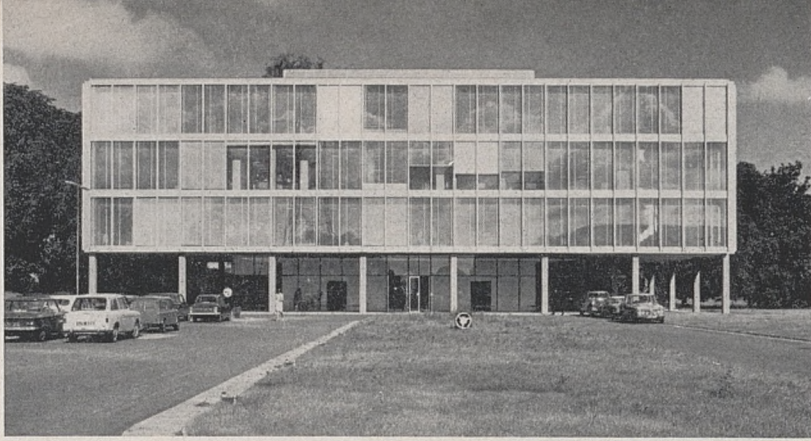
The television centre at Montrose has been designed as the first stage in a more ambitious project which will include in addition to expansion for television, a complete sound broadcasting centre. It was necessary to plan the full development in principle to ensure that what we made now was capable of expansion in every single department as need and experience would demand and to remain always a totality. This has been achieved by placing each separate department horizontal to the studio block, allowing each to expand independently in two directions while maintaining easy access to the studios at all times. The larger sound studios will be an expansion of the television studios allowing them to be used for both forms of production.

The studio block was completed in 1961. A new office block and canteen building were added in 1966 taking all non-technical functions out of the studio building.



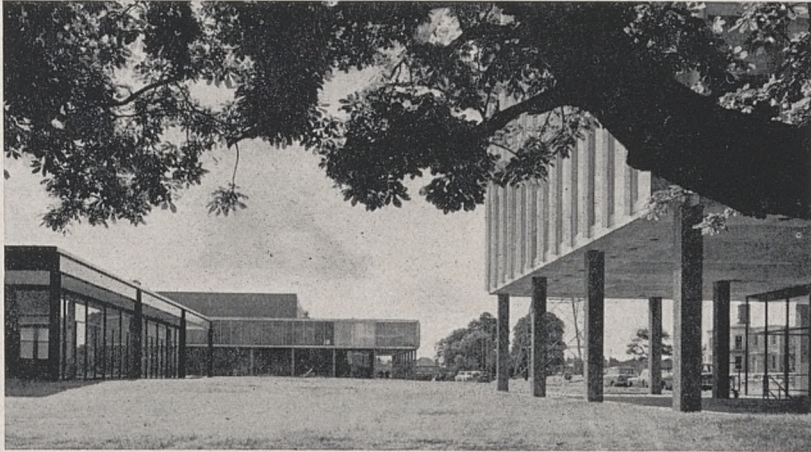
1

1. TV studios
2. Office block
3. Canteen, TV studios and office block
4. Office block from canteen

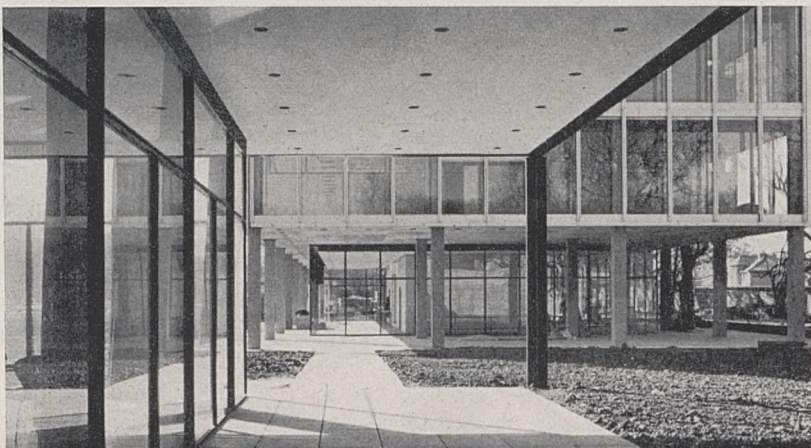
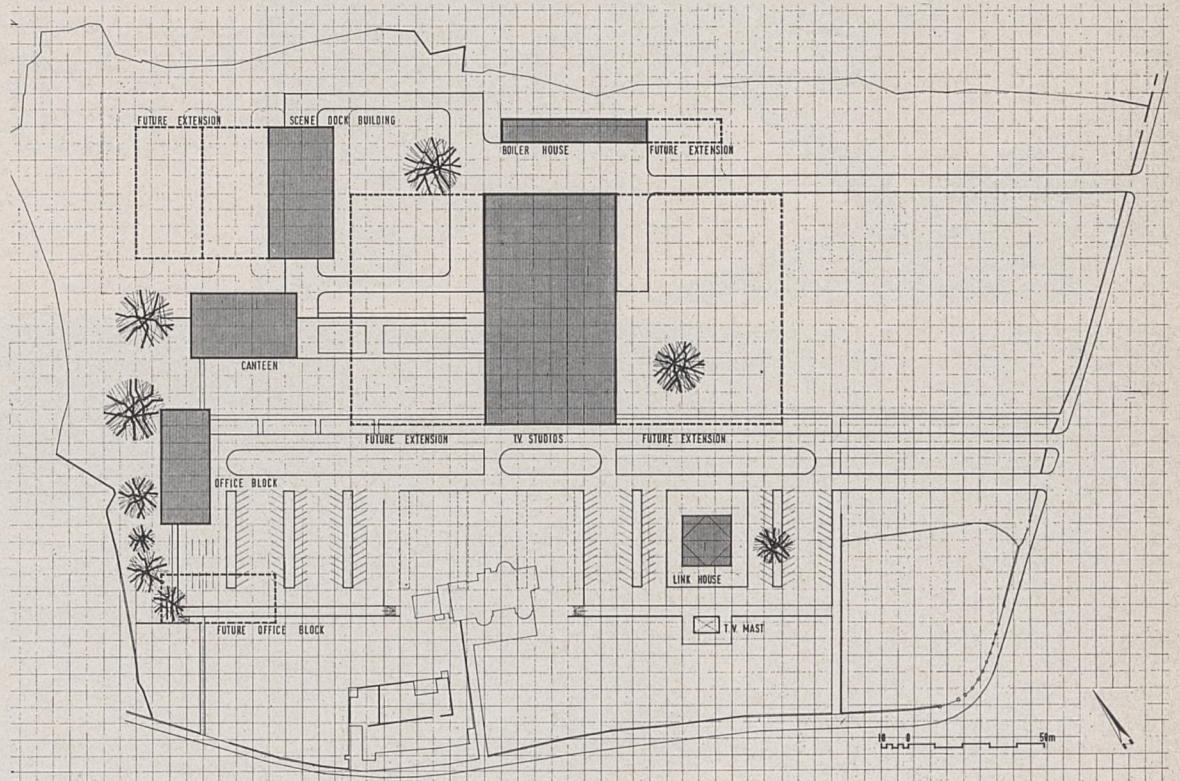


Photos: John Donat

2



3



4