

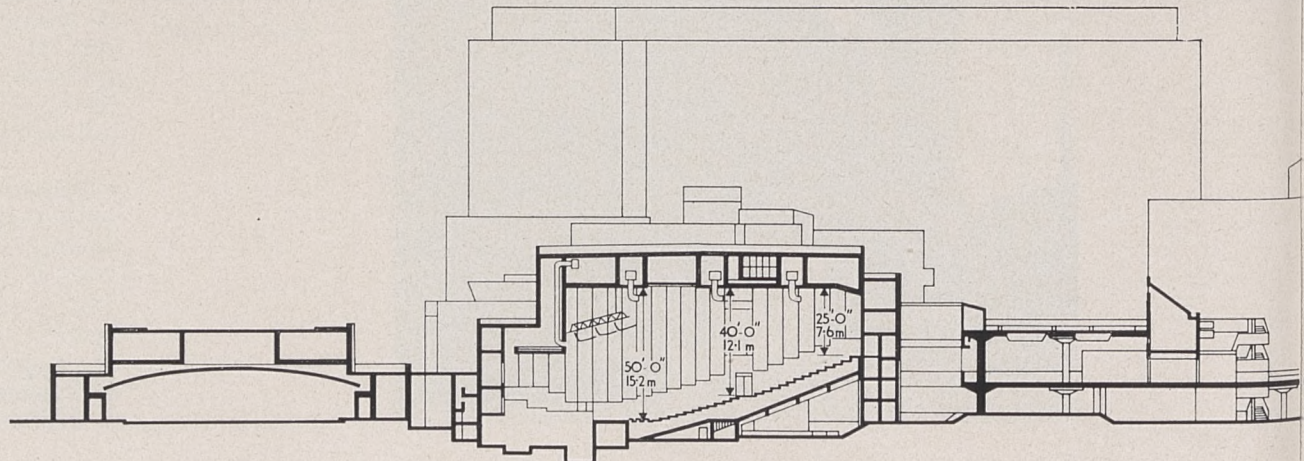
Concert halls on the South Bank

Designed by Hubert Bennett,
architect to GLC

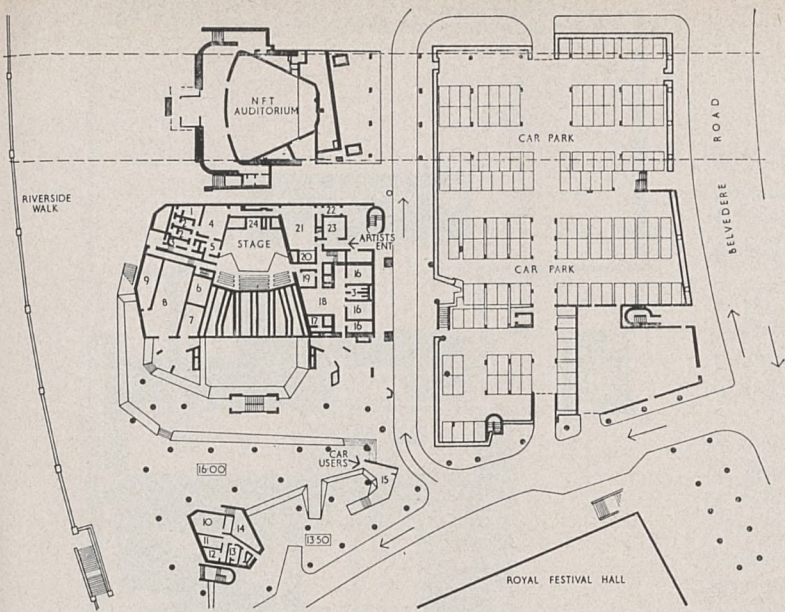
Deputy architect	Jack Whittle (preceded by F. G. West)
Senior architect civic design and general division	Geoffrey Horsfall
Deputy architect	W. J. Appleton
Group leaders	E. J. Blyth N. Engleback
Job architects	J. A. Roberts W. J. Sutherland
Director of mechanical and electrical services	C. A. Belcher Harry Trinick & Partners
Quantity surveyor consultants	Ove Arup & Partners
Structural engineer	P. Dunican
Partner in charge	Hugh Creighton
Acoustical	P. H. Parkin



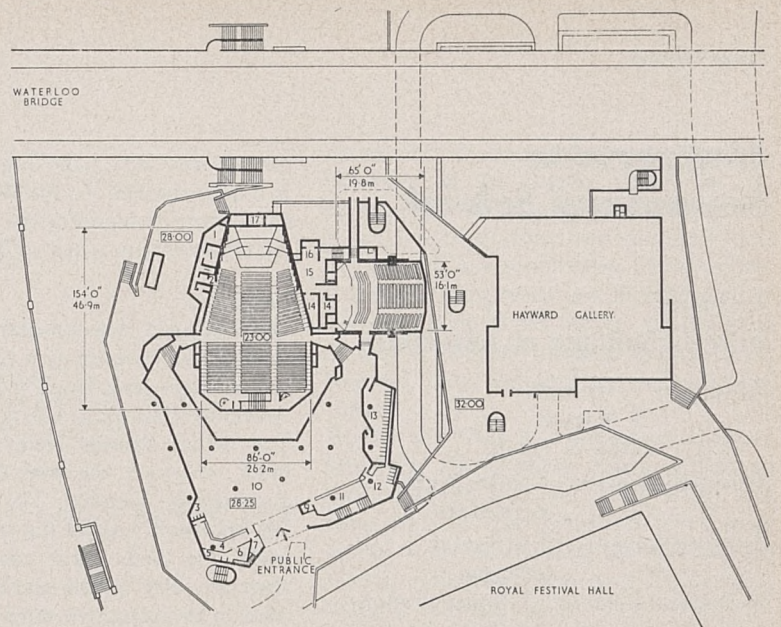
Photos: Greater London Council



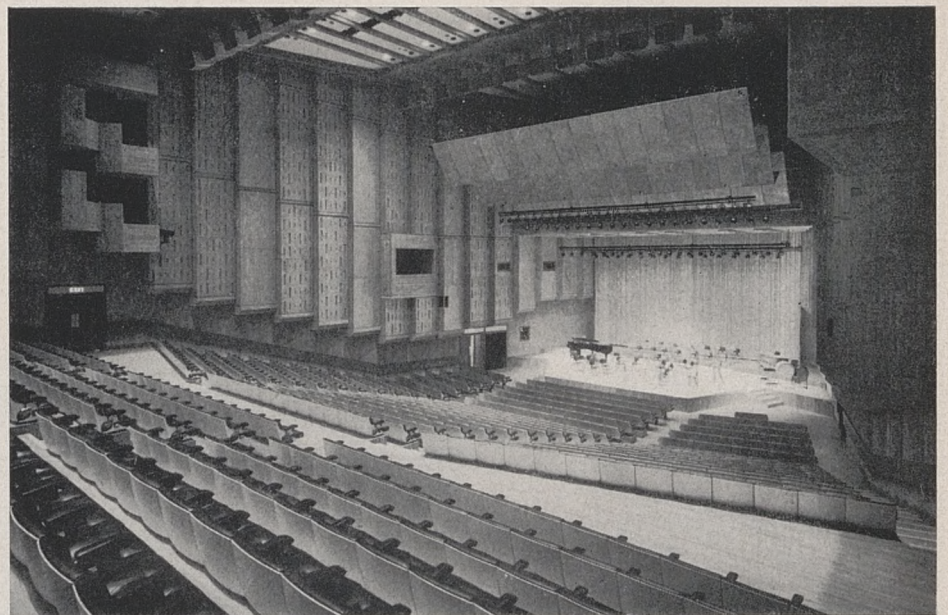
Long section
Right, foyer
Left, National Film Theatre



Plan at road level 13.00



Plan of pedestrian bridge level 32.00



The Queen Elizabeth Hall comprises two auditoria and will complement the existing Royal Festival Hall. The larger auditorium has a design based on an optimum reverberation period for musical performance. The walls are lined with Helmholtz resonators, which have variable slots absorbing frequencies at different levels.

The smaller auditorium, the Purcell room, has been designed to fill the need for the debutant musician.

The two auditoria are linked by a single foyer which has been designed in free monolithic concrete form with the use of random placed mushroom columns supporting both the floor and the ceiling. The pattern of flat concrete beams between the mushroom columns is interposed with a series of suspended absorbing ceilings.

The Queen Elizabeth Hall is part of an overall complex that will contain the art gallery which is yet to be completed and an extended National Film Theatre.

